

HPL TABLETOPS

TABLE TOPS

NEW




**FABRICATION
ALLEMANDE**



COMPACT & DURABLE TABLETOPS

Discover the range of decors offered by Grosfillex for these tabletops, combining style and character. Wood- or concrete-look finishes blend easily into any type of hospitality environment.

Pre-equipped with mounting rails on the underside, they can be easily fixed to all table bases available on the market.

+ PRODUCT

- › **Universal fixing:** pre-mounted aluminium rails
- › **Robust & durable:** 10 mm thick high-density compact HPL tabletop, impact-resistant
- › **Indoor & outdoor use:** UV- and moisture-resistant
- › **Non-porous surface:** food-contact safe & easy to clean
- › **Heat resistant:** up to 160°C
- › **2-year warranty**





Rounded edge (25°) : softer,
safer design

Top & bottom chamfer: floating
effect, improved ergonomics

Thickness: 10 mm



Grosfillex

Nordic Teak



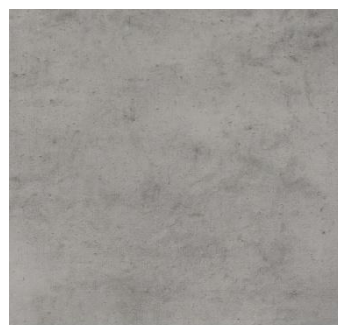
Grosfillex

Sweden Oak



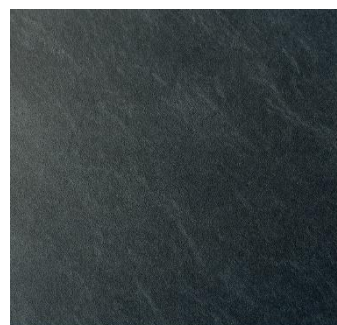
Grosfillex

Truffle Brown



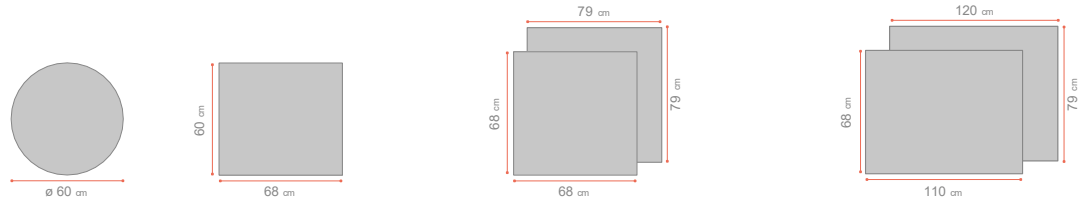
Grosfillex

Lightgrey Beton



Grosfillex

Anthracite Granite



	PLATEAUX HPL (RAILS)					
	ø60	60x68	68x68	79x79	110x68	120x79
X2.0	•	•	•	•		
X2.0 HAUT	•	•	•	•		
X2.0 DOUBLE					•	•
XONE	•	•	•	•		
XONE XL				•		
XONE HAUT	•	•	•	•		
XONE DOUBLE					•	•
QUATTRO	•	•	•	•		
QUATTRO HAUT	•	•	•	•		
ECOFIX SIMPLE	•	•	•	•		
ECOFIX DOUBLE					•	•

HPL TABLE TOPS (RAILS)



	NORDIC TEAK Cœur Noir	TRUFFLE BROWN Cœur Noir	SWEDEN OAK Cœur Noir	ANTRHACITE GRANITE Cœur Noir	LIGHTGREY BETON Cœur Noir
ø 60 cm	Y0 401 856	Y0 401 857	Y0 401 858	Y0 401 859	Y0 401 860
60 x 68 cm	Y0 601 856	Y0 601 857	Y0 601 858	Y0 601 859	Y0 601 860
68 x 68 cm	Y0 701 856	Y0 701 857	Y0 701 858	Y0 701 859	Y0 701 860
79 x 79 cm	Y0 801 856	Y0 801 857	Y0 801 858	Y0 801 859	Y0 801 860
110 x 68 cm	Y0 901 856	Y0 901 857	Y0 901 858	Y0 901 859	Y0 901 860
120 x 79 cm	Y1 001 856	Y1 001 857	Y1 001 858	Y1 001 859	Y1 001 860